
AGP Slot and PCI Express Graphics Slot (PCI Express x 4) Installation Guide (for Windows XP)

This installation guide will lead you to install AGP VGA card into AGP slot and PCI Express VGA card into PCI Express Graphics slot (PCI Express x 4) properly. Please carefully follow the procedures below according to the current condition of your PC system.

Demo VGA card devices:

1. WinFast A340TDH + ASUS-EN5750

STEP1: Install the AGP card into the AGP slot. Please follow the procedures below



If you want to install more than one graphics cards to this motherboard, please follow the priority: AGP VGA card, PCI Express card ,and then PCI card. Please do not install more than one graphics cards at the same time!

1. Before installing the expansion card, please make sure that the power supply is switched off or the power cord is unplugged. Please read the documentation of the expansion card and make necessary hardware settings for the card before you start the installation.
2. Remove the bracket facing the slot that you intend to use. Keep the screws for later use.
3. Align the card connector with the slot and press firmly until the card is completely seated on the slot.
4. Fasten the card to the chassis with screws.

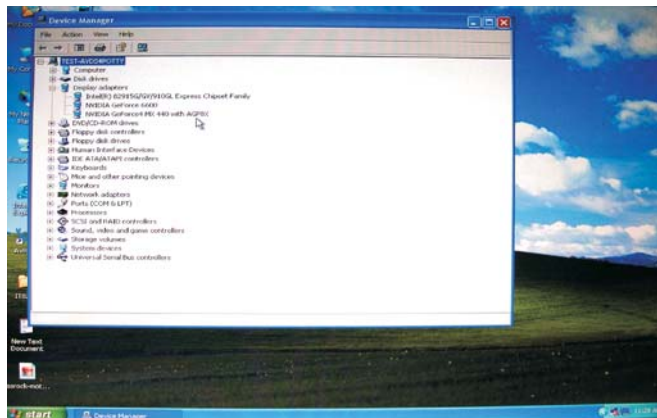


If you want to install more than one graphics cards to this motherboard, please make sure that the AGP heatsink is not too thick to collide with PCI Express card.

STEP2: Install the OS (Operating System) and drivers of this motherboard

STEP3: Install the AGP VGA card drivers

Install the drives and any related software which are provided by the graphics card vender. Please make sure the drivers are successfully installed to your computer.



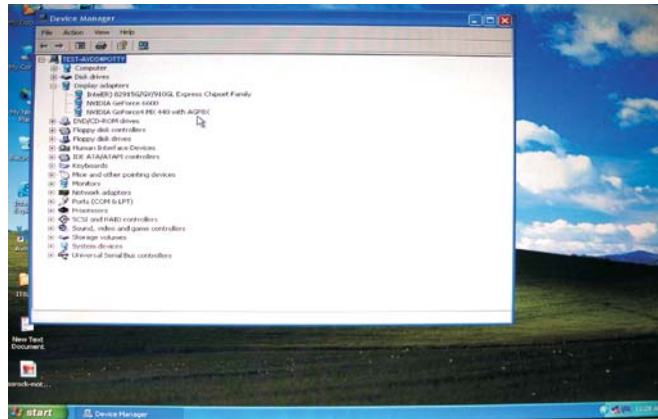
STEP4: Restart your computer

STEP5: Install the PCI Express VGA card into the PCI Express Graphics slot (PCI Express x 4), please follow the instructions below

1. Before installing the expansion card, please make sure that the power supply is switched off or the power cord is unplugged. Please read the documentation of the expansion card and make necessary hardware settings for the card before you start the installation.
2. Remove the bracket facing the slot that you intend to use. Keep the screws for later use.
3. Align the card connector with the slot and press firmly until the card is completely seated on the slot.
4. Fasten the card to the chassis with screws.

STEP6: Install the PCI Express VGA card drivers

Install the drives and any related software which are provided by the graphics card vender. Please make sure the drivers are successfully installed to your computer.

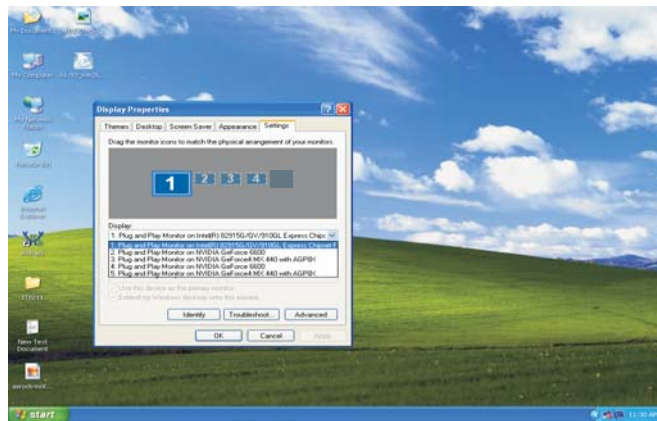


STEP7: Restart your computer

STEP8: Set up a multi-monitor display

Right click the desktop, choose “Properties”, and select the “Settings” tab so that you can adjust the parameters of the multi-monitor according to the steps below.

1. Click the “Identify” button to display a large number on each monitor.
2. Right-click the display icon in the Display Properties dialog that you wish to be your primary monitor, and then select “Primary”. When you use multiple monitors with your card, one monitor will always be Primary, and all additional monitors will be designated as Secondary.



3. Select the display icon identified by the number 2.
4. Click “Extend my Windows desktop onto this monitor”.
5. Right-click the display icon and select “Attached”, if necessary.
6. Set the “Screen Resolution” and “Color Quality” as appropriate for the second monitor. Click “Apply” or “OK” to apply these new values.
7. Repeat steps 3 through 5 for the display icon identified by the number three, and four.



STEP9: Use Surround Display

Click and drag the display icons to positions representing the physical setup of your monitors that you would like to use. The placement of display icons determines how you move items from one monitor to another.

